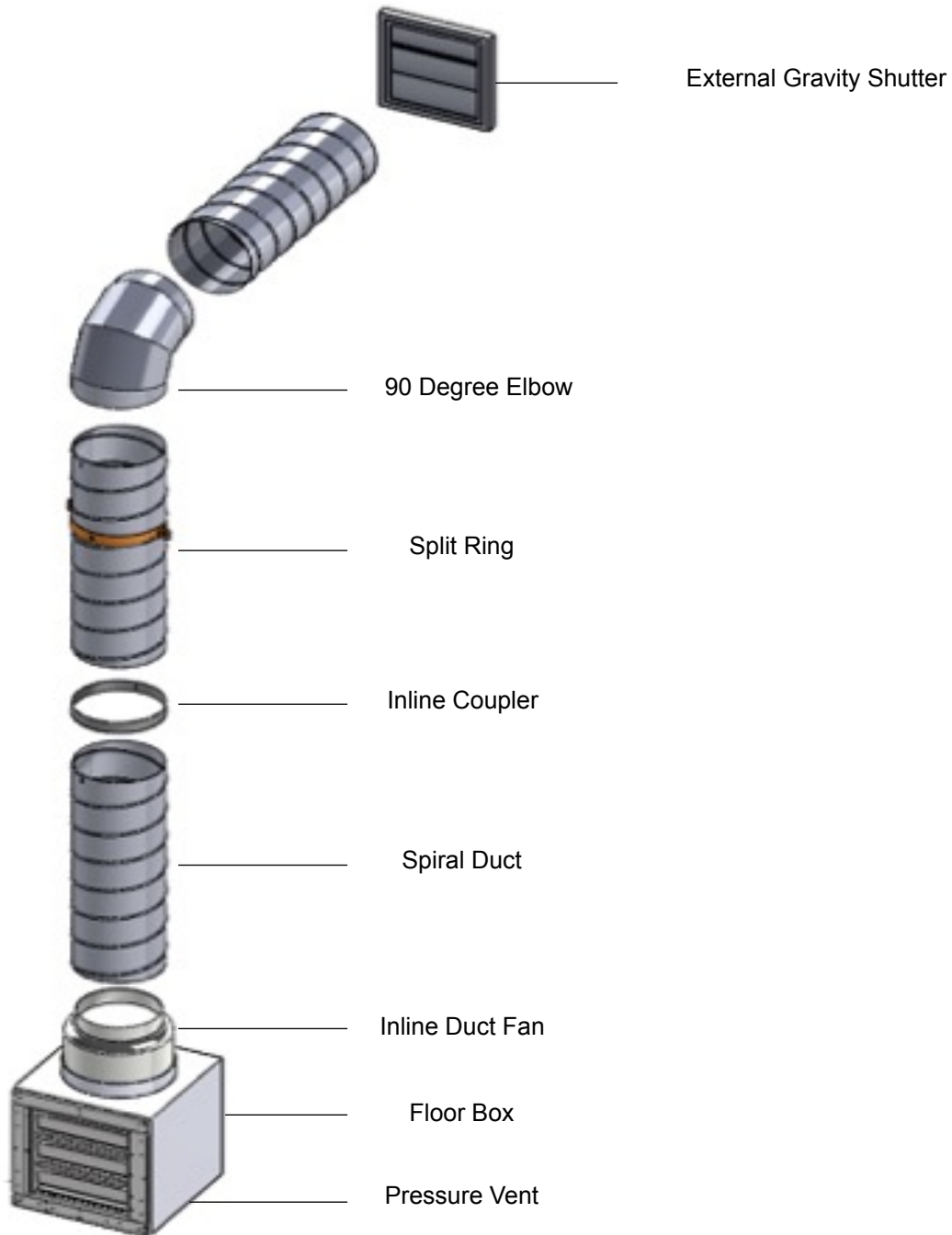


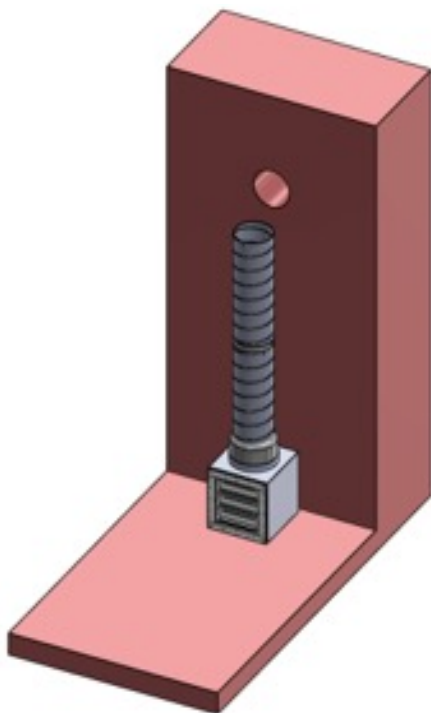
PXF

Floor Standing Chemical Gas Extract Unit



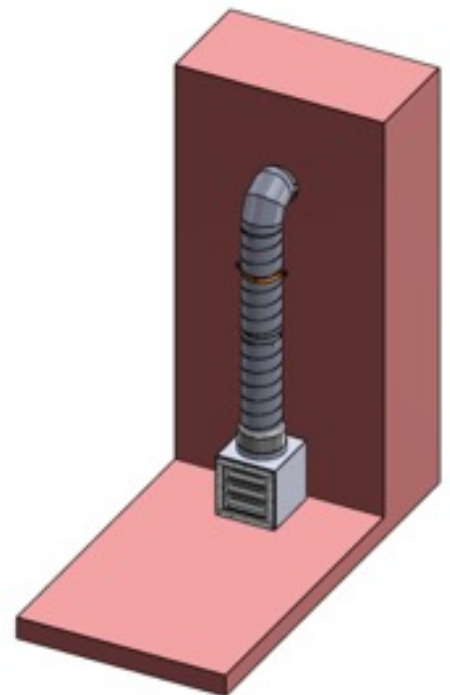


A. After boring exhaust hole in wall remove pressure vent from floor box and line up with hole. Place elbow on duct fan to distance box from wall. Screw to floor with suitable fixings.



B. Install spiral duct using TEK screws and duct sealant.

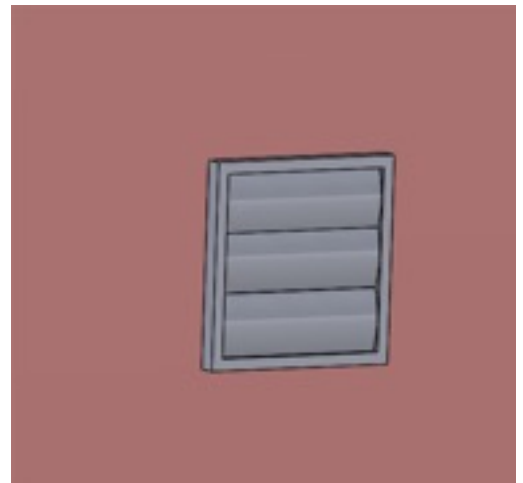
If the serial needs extra support use split ring.



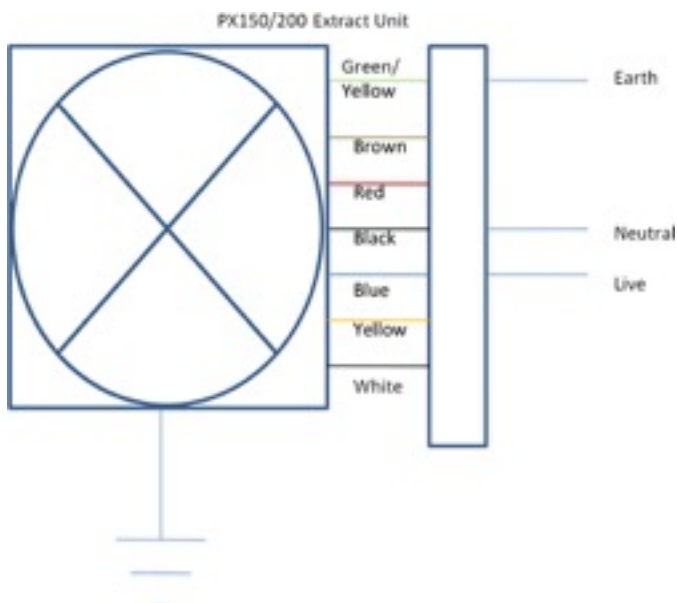


C. Finally attach surface mounted gravity shutter over exterior hole with suitable fixings.

The fixing holes are found in the frame under the blades.



Wiring diagramme for RR250C and RR315C motors.



Power Rating			
PXF250	High	185W	0.81A
RR250C	Low	130W	0.59A
PXF315	High	274W	1.19A
RR315C	Low	200W	0.91A
Extraction Rate			
PXF250	550m3 per hour		
PXF315	1800m3 per hour		

This should be wired into the key switch provided.